

Next Meeting

Sunday
March 8, 2009
3:00 p.m.

Demo by
Marie Maines

Meeting
Location

Royal Lane
Baptist Church
6707 Royal Lane
Dallas, TX 75230

**Error! Reference
source not found.**

27th Annual Open Juried Exhibition a big Success!

This year's show was held at the Fort Worth Community Arts Center in November. The venue, in the heart of the Arts District, provided beautiful lighting for the display of the work. As usual, the entries were exceptional and the competition very tough. Bill James's scorching portrait "The Reverend" was named Best of Show. Daggi Wallace was awarded first award of excellence for a three-figure stage lit piece called "Passing the Torch". Second award of excellence went to Marian Hirsch for "The Italian Garden". Third award of excellence went to Robbie George for a windy landscape called "Summer Breeze". Nancy Conant won the People's Choice award for the beautifully sensitive "Flower Girl". Thanks to all the entrants, the many volunteers and our distinguished judge, Kaye Franklin, for making this year a very special event.

President's Notes:

Welcome to the 30th year of the Pastel Society of the Southwest! 2008 was busy for our organization with two members shows, our paint-out, and our National show in November held in Fort Worth. Everyone I spoke with felt the workshop with Kaye Franklin was great. Bob Rohm will be the judge for our 2009 show and he will also be conducting a 3 day workshop. It is close to being full, so if you want to take the workshop, please contact Robbie George as soon as possible. We will continue to meet on the 2nd Sunday from 3-5 pm in March. However, we will be meeting on the 3rd Sunday for the months of April (Easter) and May (Mother's Day). September, October and November will be the 2nd Sundays. We will be having a member show at our meeting place (Royal Lane Baptist Church). Members will be able to bring 1 or 2 pieces to the April meeting and pick them up at the May meeting. The cost will be \$5 per painting, due at the April take-in. (more details April newsletter) We are fortunate to have our meeting place at the church. This show will give the congregation an opportunity to see what we do. The Board met in January to start planning for 2010 and even 2011! If you have ideas or suggestions please let us know. The International Association of Pastel Societies is having its bi-annual convention in Albuquerque this May. I plan on attending along with 3 or 4 others I know. It is a great way to see what is happening in the pastel world. I will be retiring from a long career as a nurse practitioner in May, and Andy (my husband) myself and 2 dogs will spend this summer on Whidbey Island in Seattle. Be back in September, but for now, see you in March.

Janis Krendick, President PSSW

OFFICERS and DIRECTORS

President Janis Krendick
asgood2@verizon.net

Vice-President Pat Sebern
pat@psdesignfineart.com

Secretary Judy Kay Maddox
judykaymaddox@yahoo.com

Treasurer John Kirtz
johnboyfsh@aol.com

Membership Joanne Hawkins
hhawkins3@tx.rr.com

National Show Chair June Holloway
junerholloway@yahoo.com

National Show Assistants
Marie Maines (FW)
rm_maines@hotmail.com
Connie Erickson
c.art.erickson@gmail.com
Linda Smith
lindakaysmith@verizon.net

Workshop Chair Robbie George
georger@ctesc.net

Workshop Asst Pam Hardigree
pamsimages@yahoo.com

Newsletter Martin Prakope
m.prakope@tx.rr.com

Historian Carol Epler
carol_e@grandecom.net

//webmaster Faisal Tariq
ftariq68@yahoo.com

Publicity Chair April Bradshaw
captmartinapril@aol.com

Hospitality Joy Nguyen
lovebabies@yahoo.com
Pat Bailey
baileyp31@yahoo.com

Telephone Committee
(Dallas) Beth Shirley
pastel.artist@yahoo.com
(FW) Donna Leeman
donnaelee@mindspring.com

Pasteller

News You Can Use

1. Arlene Butterworth Taylor would like to announce 2 pastel workshops at Fossil Rim Wildlife Center, near Glen Rose, Texas. One will be March 7th & 8th and one September 26th and 27th. Contact Fossil Rim at 254-897-2960 and choose option 4 or go to info@fossilrim.org.
2. Marin Society of Artists National Show will be August 2nd thru August 30th. Entry deadline May 1, 2009. See: marinsocietyofartists.org for more information.
3. Highland Valley studios has workshops and classes on a 30 acre ranch in San Diego, California. There is a potential to instruct as well. See www.highlandvalleystudios.com for more information.
4. Marian Hirsch will be the April feature guest artist at the Garret Art Gallery 2nd Saturday Artwalk. The April 11th opening and reception is from 7 to 10 pm located on the north side of the square in historic downtown McKinney. Paintings will hang through May 7th. Fellow PSSW members, Gaye Kelly and Belle Homme also have work on exhibit at the gallery.
5. Peggy Kirkland was the winner of the Sennelier pastel set. The raffle (November meeting) brought in \$700+ which was split between PSSW and Palmer Arts Village.
6. Deborah Paris is announcing 2 workshops to be held at her studio in Clarksville, TX. "Painting the Luminous Landscape" Oil March 28 and 29th. "Painting the intimate Landscape en Plein Air" oil/pastel April 25 and 26th. E-mail her for details Deborahmparis@aol.com.
7. Garrett Middaugh has had an excellent year of sales in 2008. He sold 9 large pastels (36 x 24) to Chevron for offices in Houston, New Orleans and Alaska and 5 Large pastels to M.D. Anderson hospital in Houston. Congratulations Garrett!
8. Niki Gulley offers adult art classes. Contact her at 214-803-5812 or niki@nikigulley.com.
9. Dina Gregory will offer a plein air pastel workshop on May 2nd & 3rd in Bosque County. Contact Jane Scott at 254-675-3724.

March Featured Artist Glenna Lasater: "Put Heart in your Work"



The Pastel Society of the Southwest is privileged to be populated with talented and creative individuals. I was particularly pleased when Glenna Lasater, one of our Signature Artists, consented to an interview and to be this month's featured artist. Glenna's passion for the Pastel medium and her hard work explain her success as a pastellist.

After a pleasant drive across town, I was welcomed into Glenna and husband Charles beautiful home near Texas Christian University in Ft. Worth. Glenna started working with pastels about 15 years ago and has made a concentrated study of the medium. She has accumulated a sizable library of books which she has thoroughly absorbed.

Additionally, she takes classes and seminars and studies from video and DVD. Glenna's first exposure was a seminar given by Judy Pelt at the Ft. Worth Women's Club. Judy has provided inspiration and mentoring for Glenna over the years. From there her curiosity turned into passion.

Glenna gets much of her inspiration for her work from outdoor photos she takes from travel to Vermont, Colorado and New Mexico. The real key to her success as an artist is her involvement in the individual project. Without hesitation Glenna suggests: "Put your heart into your work and get inspiration from the people, things or places you love." Her immersion into a painting is very focused.

After she has isolated an image for a project, she will develop a composition. When sketching initial compositions for the project, she will use sharpened Nu Pastel for clear crisp lines that will help her define ideas.

Hard work on technical aspects of pastel work have paid off for Glenna. She has made a detailed study of color and developed a number of color wheels. She feels avoiding "confusing coloration" is important in working up a pastel painting. In her beautiful "art room" in her home, she has separated her art materials into warm and cool components to draw on colors in an organized and well-planned fashion.

Glenna likes Schminke and Unison pastels. She will use various techniques in further developing the painting. For some projects, she will use fixative between layers of pigment. She may use brushes for a particular piece. Sometimes the work will be done with the side of the pastel, sometimes the tip. She uses a chamois to erase and does not fix the final art. Music is an important component to Glenna's work. When painting, she will lose herself in her favorite New Age musicians.

I asked Glenna why she chose pastels over another art form? Her first answer was a love of the intensity of color. Her second answer was convenience. "When painting, I can work as long or short a time as I want. Once set up, you don't have an elaborate tear down or clean up with pastels. You can stop work and go back to work easily."

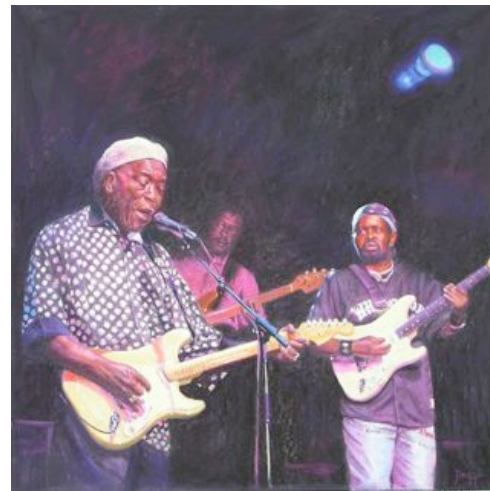
Glenna spent her career as an emergency room nurse. She wanted to emphasize safety as a priority in our discussion of technique. She recommends an air filter for the dust when working and to avoid breathing the pigment. She uses a skin barrier cream such as Oxy Fresh or as a substitute rubber gloves to avoid possible toxic exposure to the art materials.

Glenna is a charming and gracious person. She gets results in front of the easel as well. Glenna's very first effort "Sunrise in Red River" won Best in Show at the Ft. Worth Woman's Club and has won many awards since. Her excellence is obvious in her well thought out compositions and interesting and arresting art technique. Her skill with color is a credit to her hard work. Thanks for sharing with us Glenna and Charles.

27th Annual Open Juried Exhibition continued from page 1



"The Reverend" Best in Show
Bill James



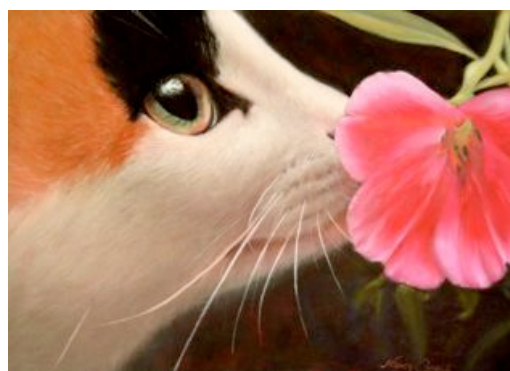
"Passing the Torch"
First Award of Excellence
Daggi Wallace



"Italian Garden"
Second Award of Excellence
Deborah Smith



"Summer Breeze"
Third Award of Excellence
Robbie George



"Flower Girl" People's Choice
Nancy Conant

Pasteller



Painting of the Month Winners
First Place: Glenna Lasater
Second Place: B.J. Setzer



Raffle Winner – Sennelier Pastels
Peggy Kirkland



Kaye Franklin Demonstration

ASEL ART ----- ASEL ART

Bring one or two paintings with you to the meetings. We are going to choose our favorites for Asel Art Supply gift certificates.

Please Remember:

1. Bob Rohm Workshop – November 5th thru 7th. Contact Robbie George, Workshop Chair 830-997-2067.
2. Please pay outstanding dues as soon as possible. This is a year you will not want to miss. Contact Joanne Hawkins, Membership Chair 214-350-7257
3. Marie Maines Demo – Glassless Pastels – March 8 meeting.

Win a free 1-year subscription to *International Artist Magazine*

Name (please print) _____

Address _____ City _____ State _____ Zip _____

Send to: Pastel Society of the Southwest
International Artist Drawing
c/o Pat Sebern
3508 Golden Aspen Drive
Flower Mound, TX 75028

Pastel Society
of the
Southwest

7801 Alma Drive
#105-186
Plano, TX 75025

webmaster@pssw.info

Faisal Tariq
Webmaster

Beasley's Fine Art Photography

1350 Manufacturing Street

Suite #205

Dallas, Texas 75207

Phone: (214) 741-1176

Fax: (214) 741-6301

Beasleysphoto@msn.com

Now Offering: JPEG Scans and

ZAP Applications

PSSW CALENDAR

Mar 8	Marie Maines	Demonstration
Apr 19	Bonnie Williams	Demonstration
May 17	Andrew Wages	Critique
		Entries for Juried Shows
Sept 13	PSA Slide Show	2008 Show Slide
Oct 11	Hugh Campbell	Demonstration
Nov 5-7	Bob Rohm	Workshop
Nov 8	Bob Rohm	Demonstration